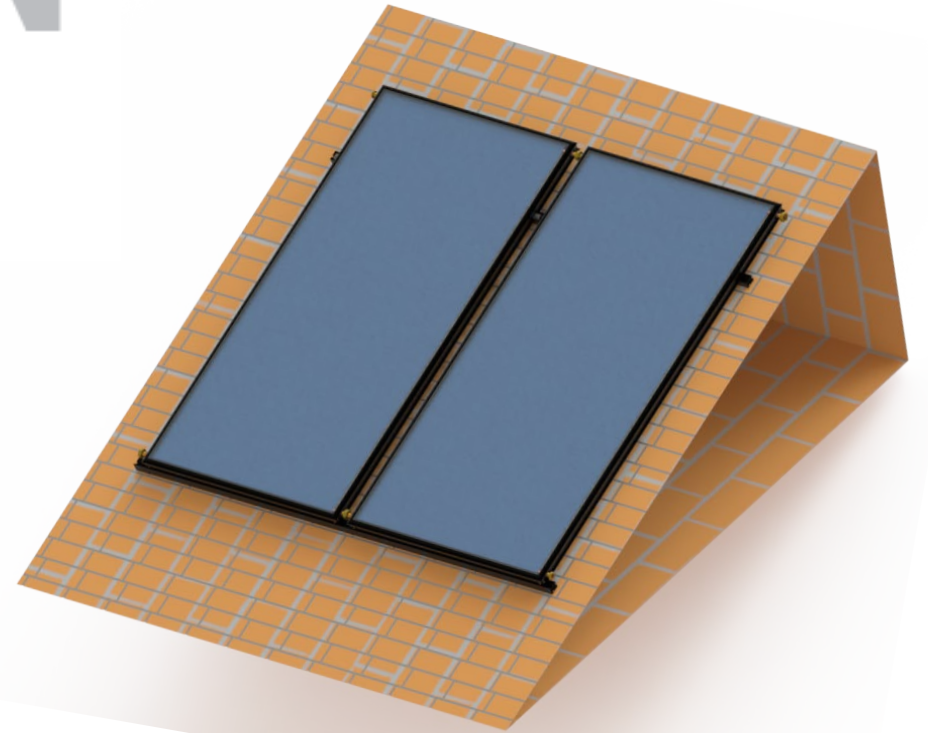


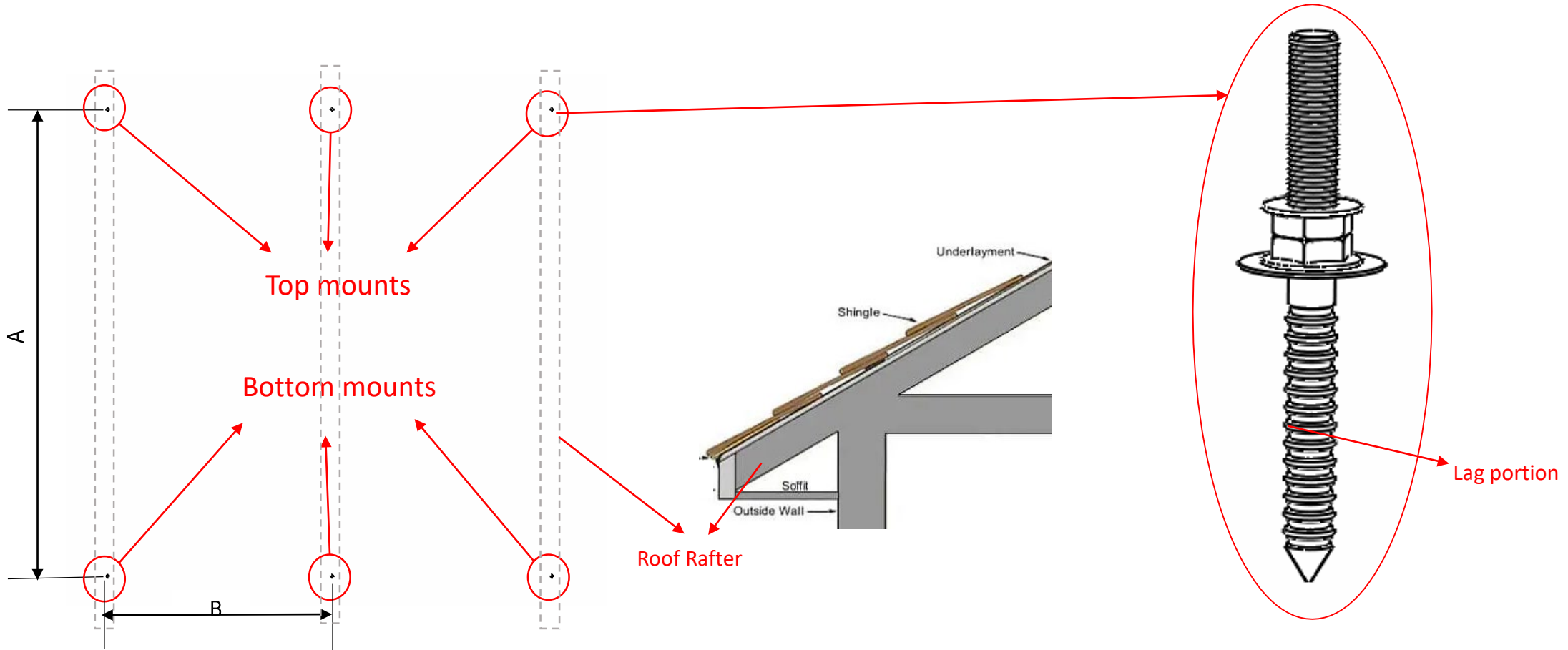
# INSTALLATION GUIDE

Two Collector Flush  
Mounting Using Rails with  
Hanger bolts

**FLSH 000 000 & RAIL 002 00B**



Step 1 -Locate a rafter and drill a 3/8" hole for the lag portion add roof sealant\*.

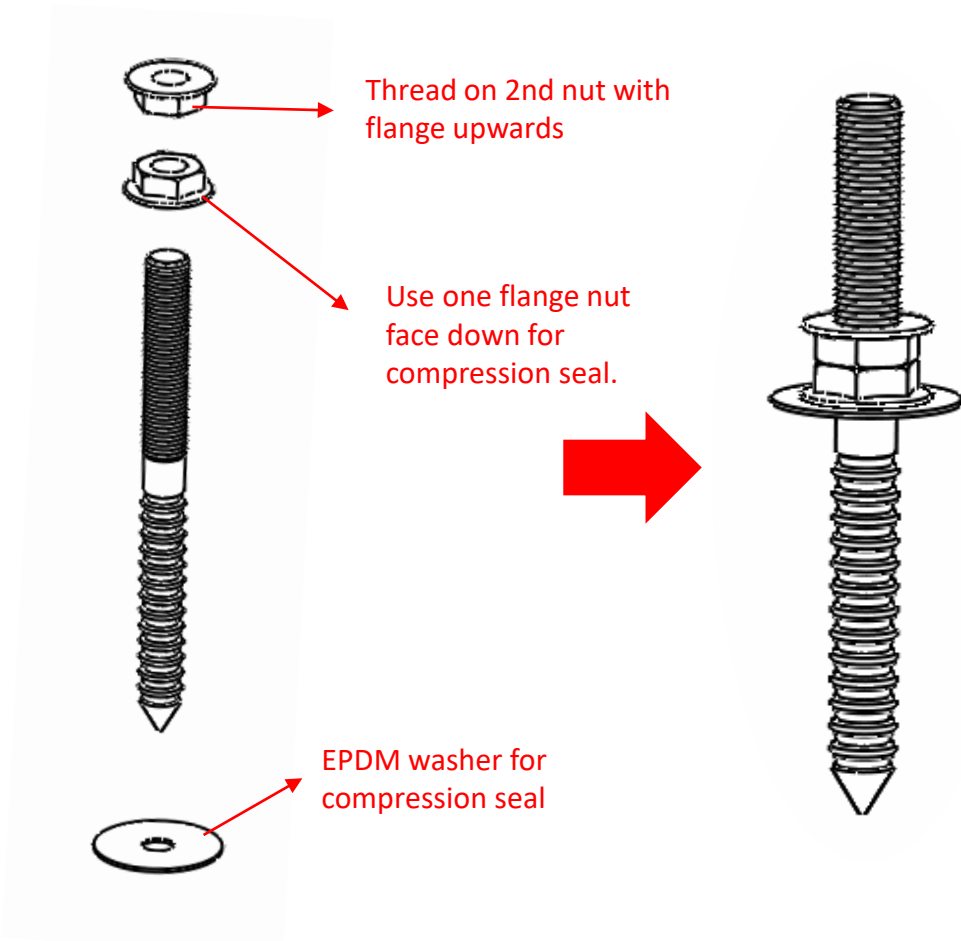


Collector Model	A	B
GOBI 410	110" - 91"	36"-50.25" Max
GOBI 408	87" - 73"	36"-50.25" Max
GOBI 406	73" - 61"	36"-50.25" Max

\*Ensure the placement of the Hanger bolts on the roof secures them to the roof rafters or structure to maintain structural integrity.

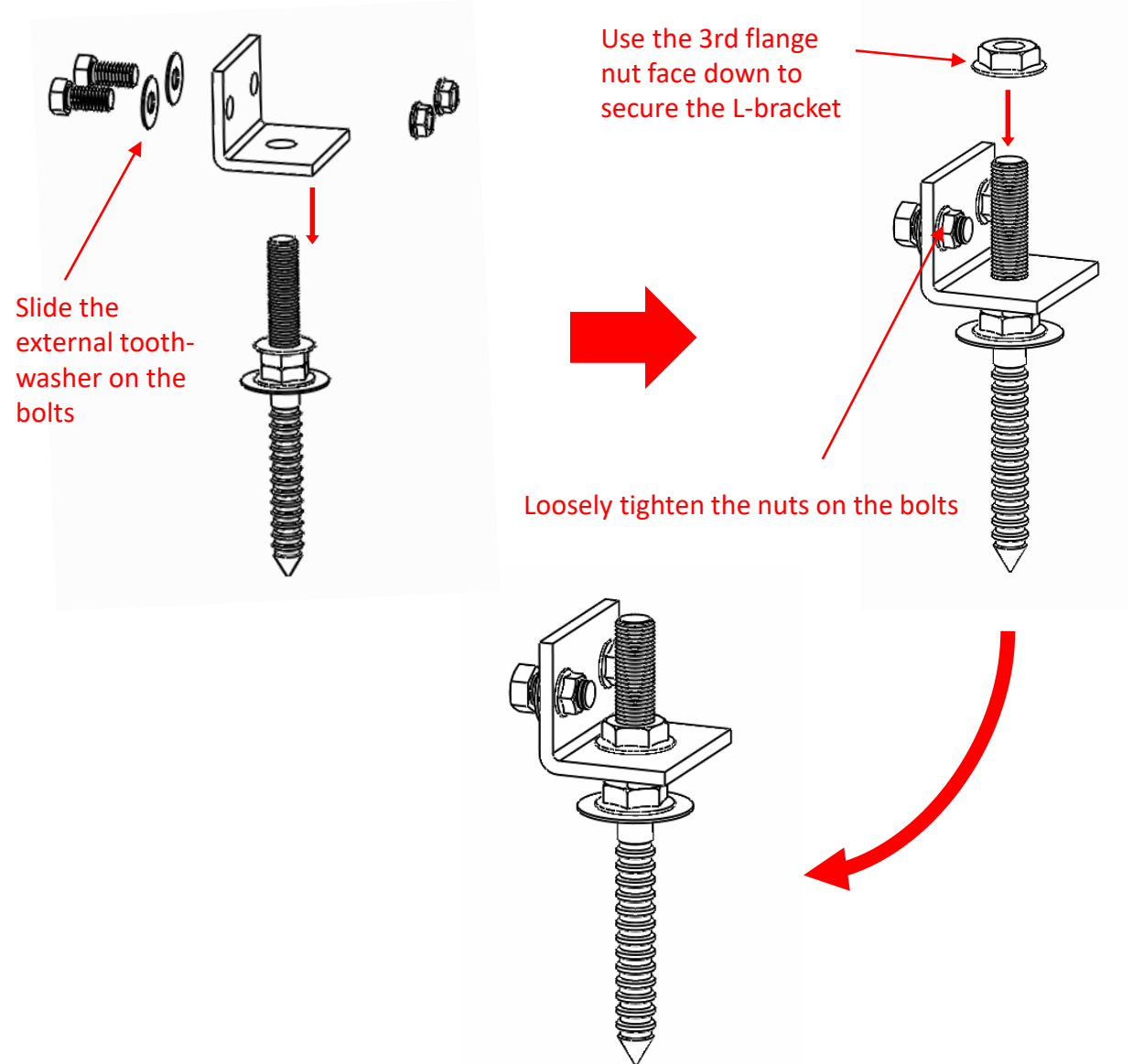
Note – For installing more rails refer to the rail splice kit install for correct leg spacing

## Step 2 – Use one flange nut face down for compression seal.

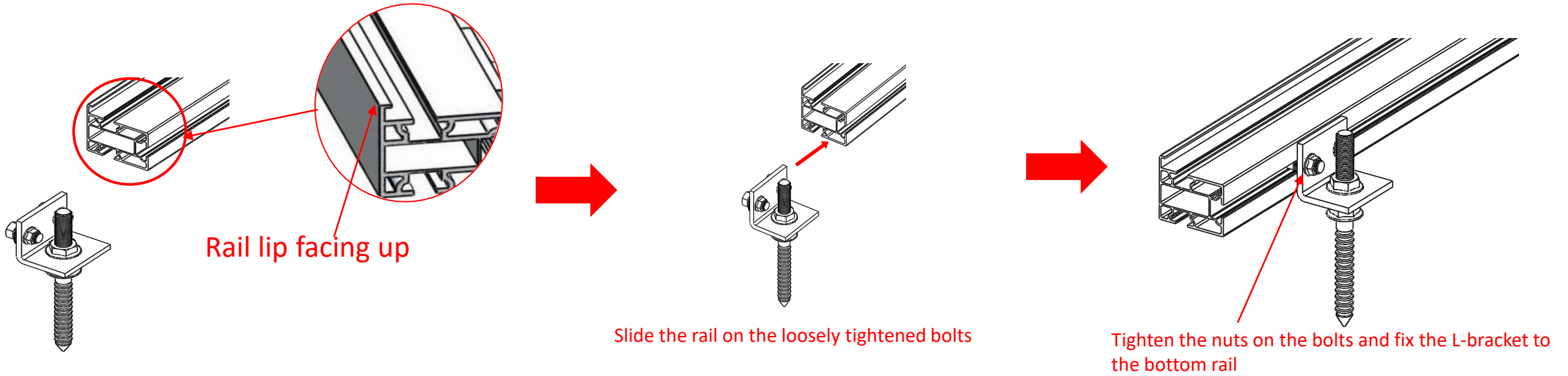


Note – Use two flange nuts backed against each other to lag bolt into the roof

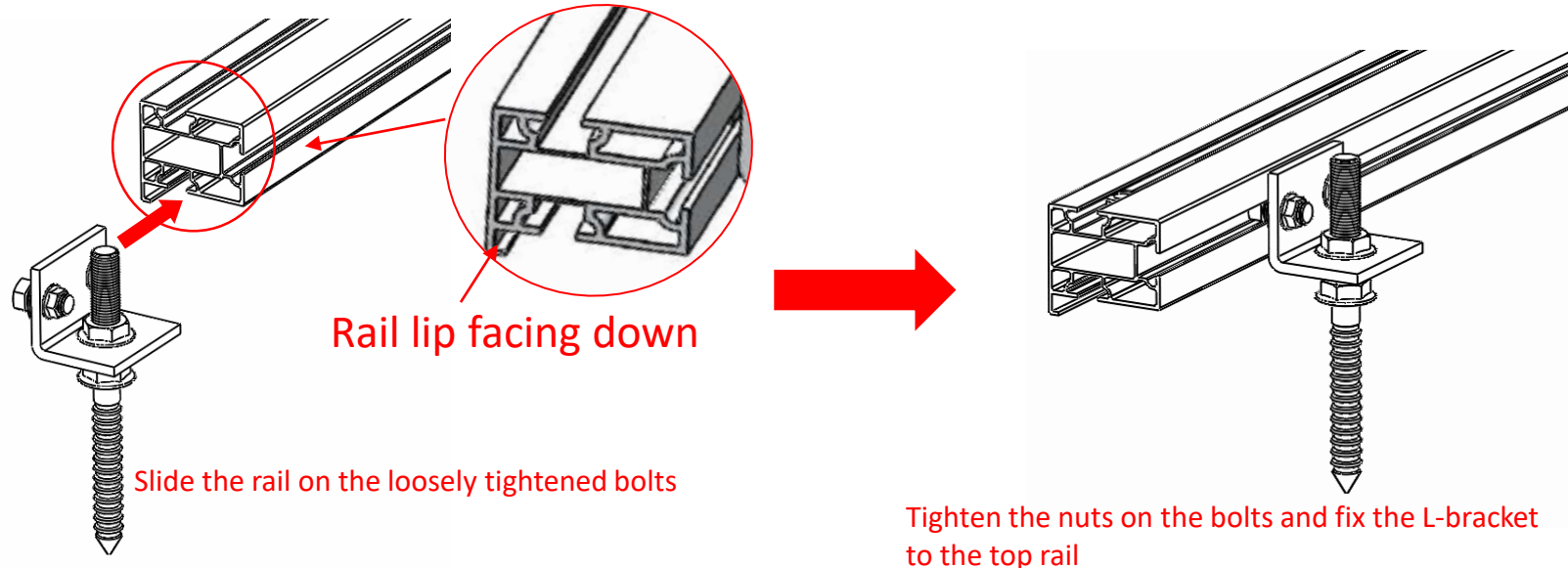
## Step 3 - Prepare the mounts for the rail installation



## Step 4 – Bottom rail orientation for front mount and installing the bottom rail on the front mounts



## Step 5 – Top rail orientation for back mounts and installing the L- bracket with the top rail

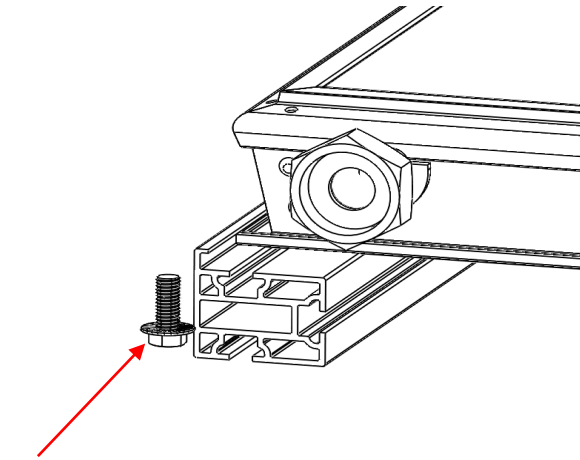


## Step 6 – Install all mounts

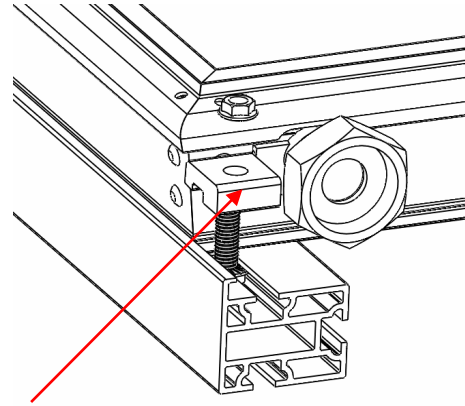


**Note :** To add more rails/ legs you need to install a splice kit please refer to the splice kit installation manual

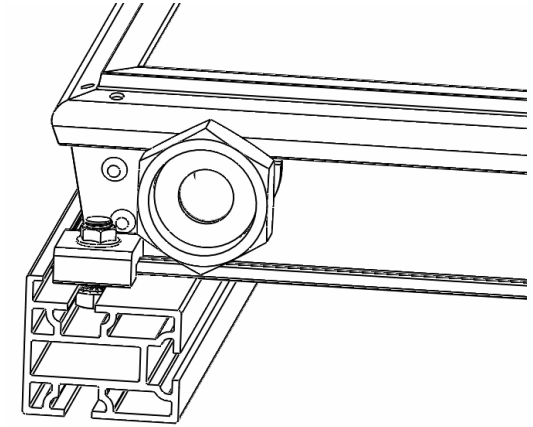
Step 7 – Slide the 1<sup>st</sup> Gobi collector on the **bottom rail** and secure the collector with the bottom rail using the helio-clip



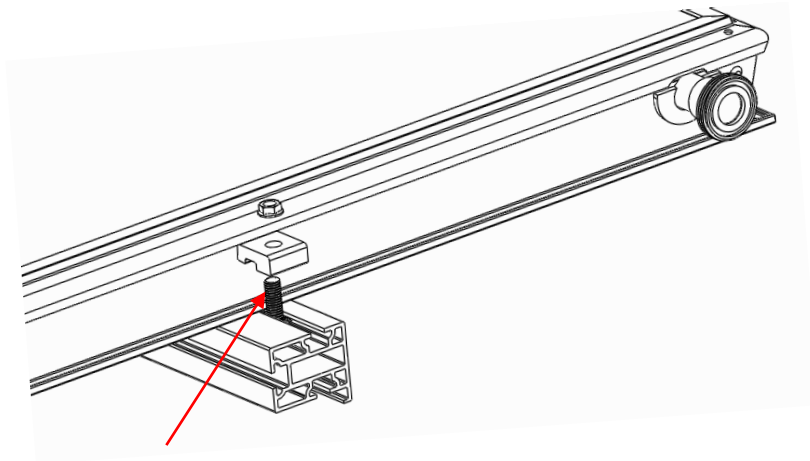
Slide Bolt with washer in the rail



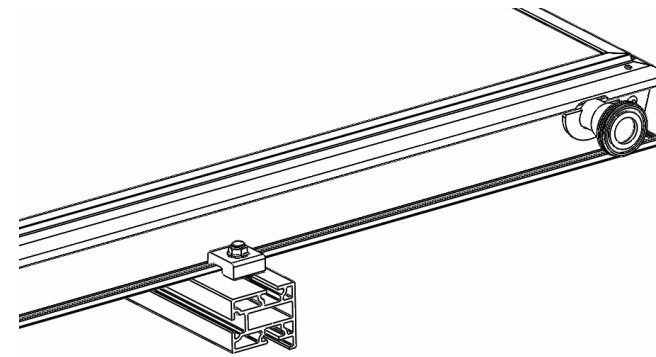
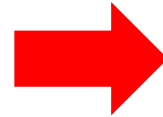
Secure the collector with a Helio-clip and nut



Step 8 – The 1<sup>st</sup> Gobi collector rests on the **top rail** and secure the collector with the top rail using the helio-clip



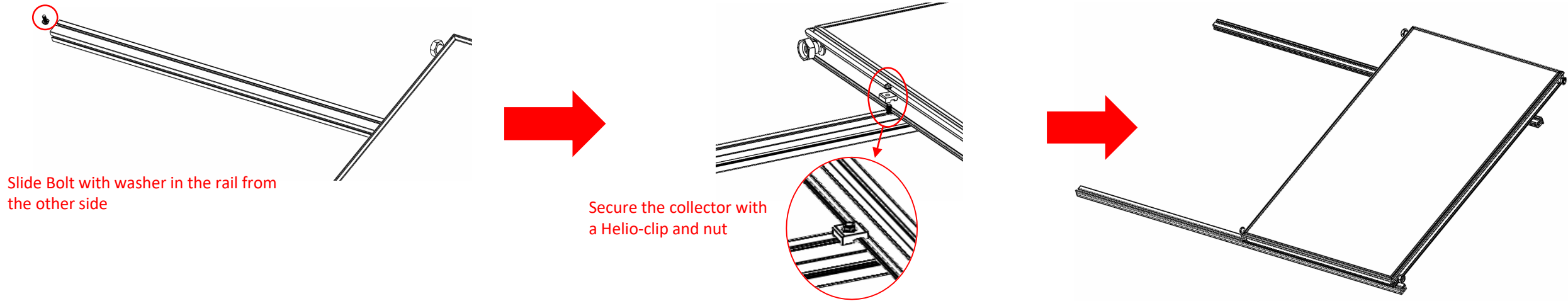
Slide Bolt with washer in the rail



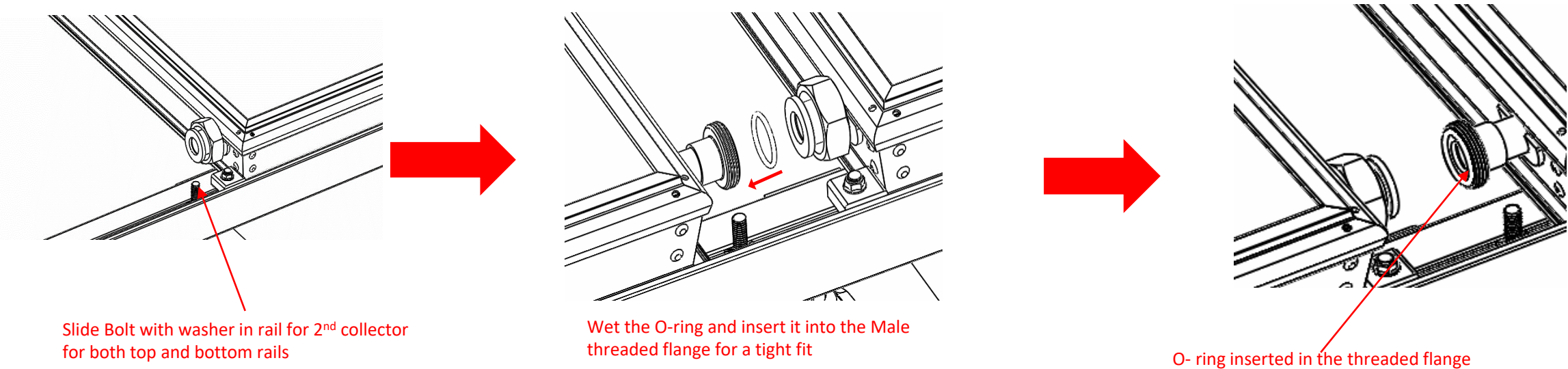
Secure the collector with a Helio-clip and nut



## Step 9 –Fixing the other side of the collector

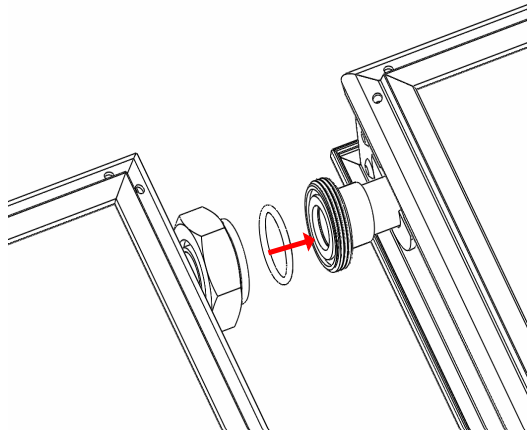


## Step 10 – Slide the 2<sup>nd</sup> collector on the bottom rail and add O-rings\* between the two collectors

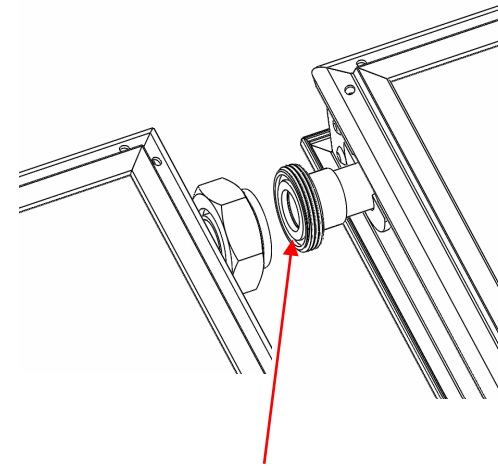


*\*Do not over-tighten or use Teflon tape to tighten the DOS unions. If the O-rings are correctly placed and tightened, they will ensure a watertight seal.*

Step 11 – Rest the **2<sup>nd</sup> collector** on the **top rail** and add O-ring\* between the two collectors



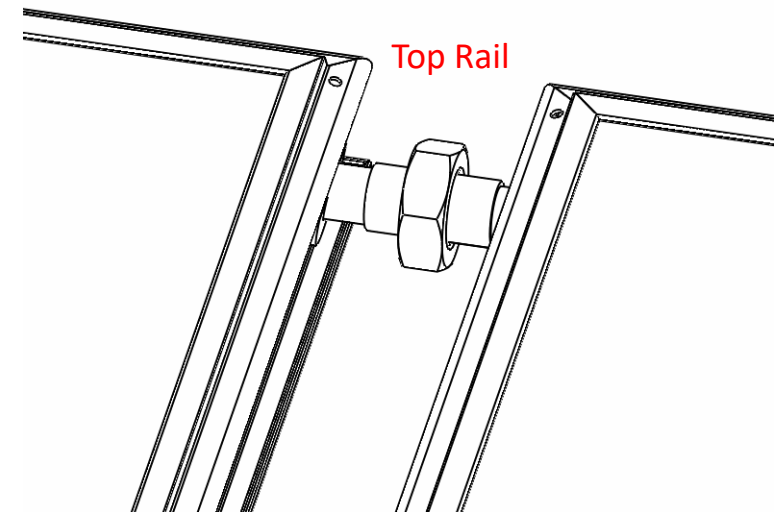
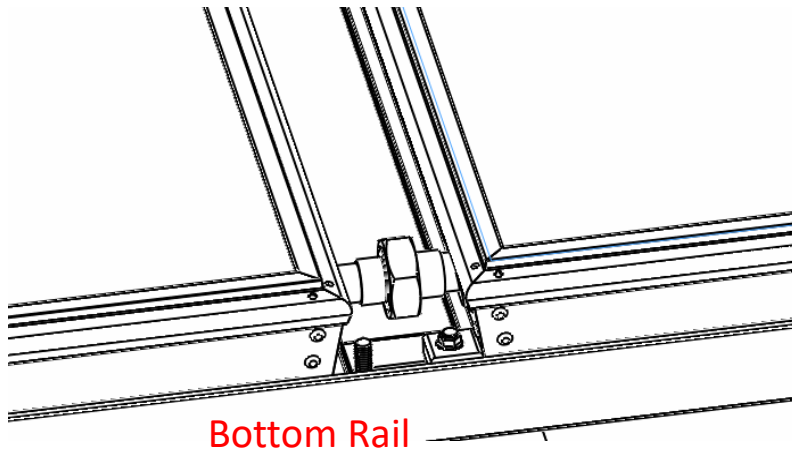
Wet the O-ring and insert it into the Male threaded flange for a tight fit



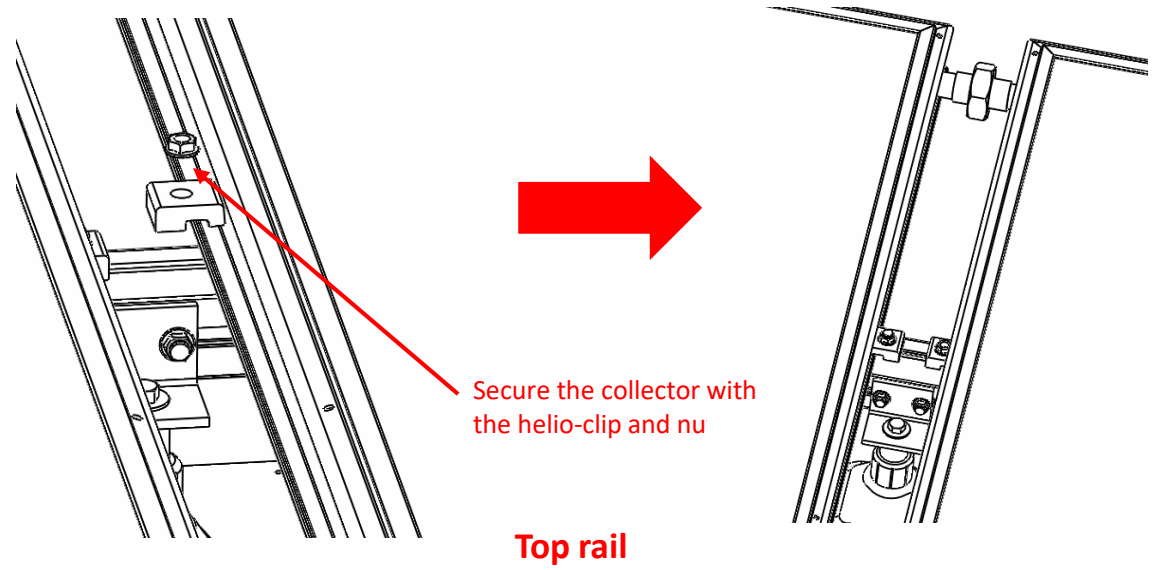
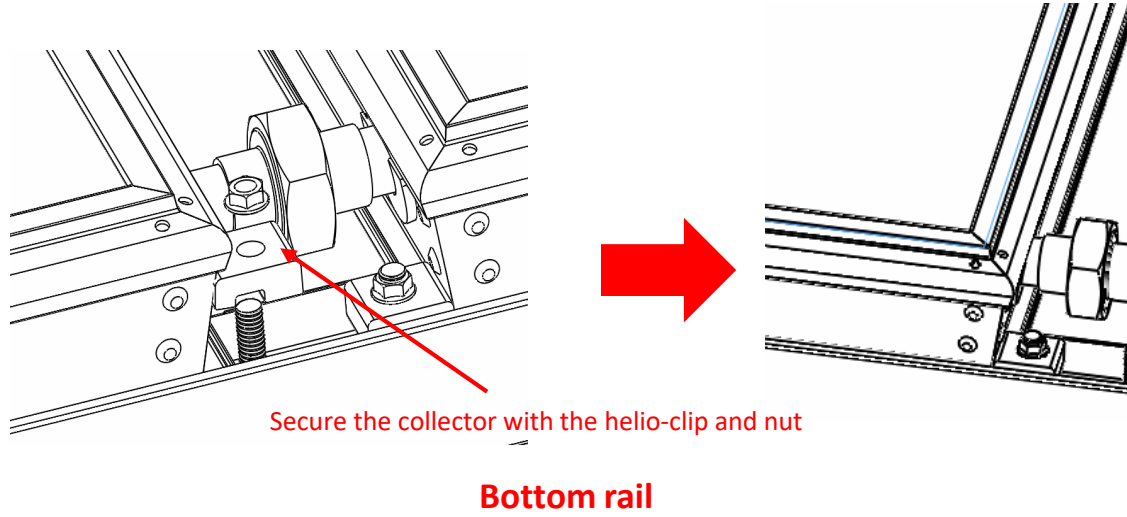
O- ring inserted in the threaded flange

*\*Do not over-tighten or use Teflon tape to tighten the DOS unions. If the O-rings are correctly placed and tightened, they will ensure a watertight seal.*

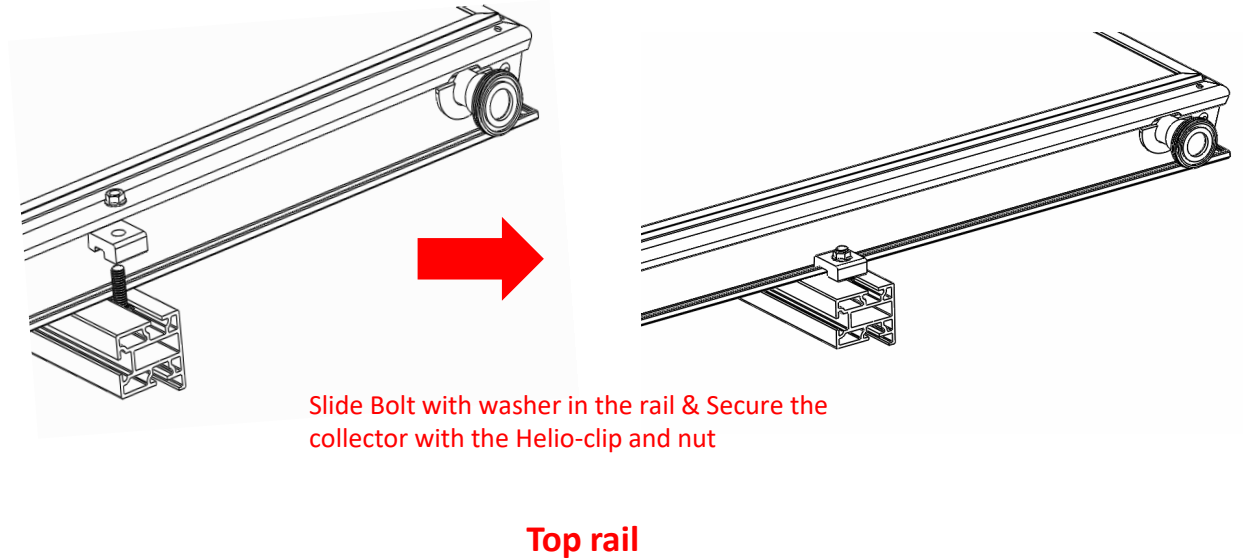
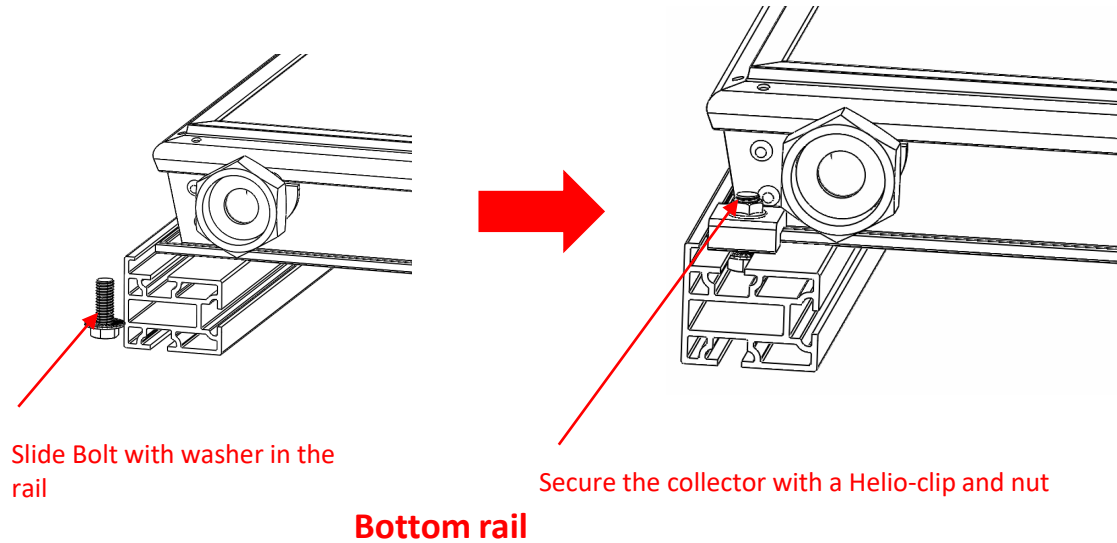
Step 12 – Secure both the DOS nut on the bottom and on the top



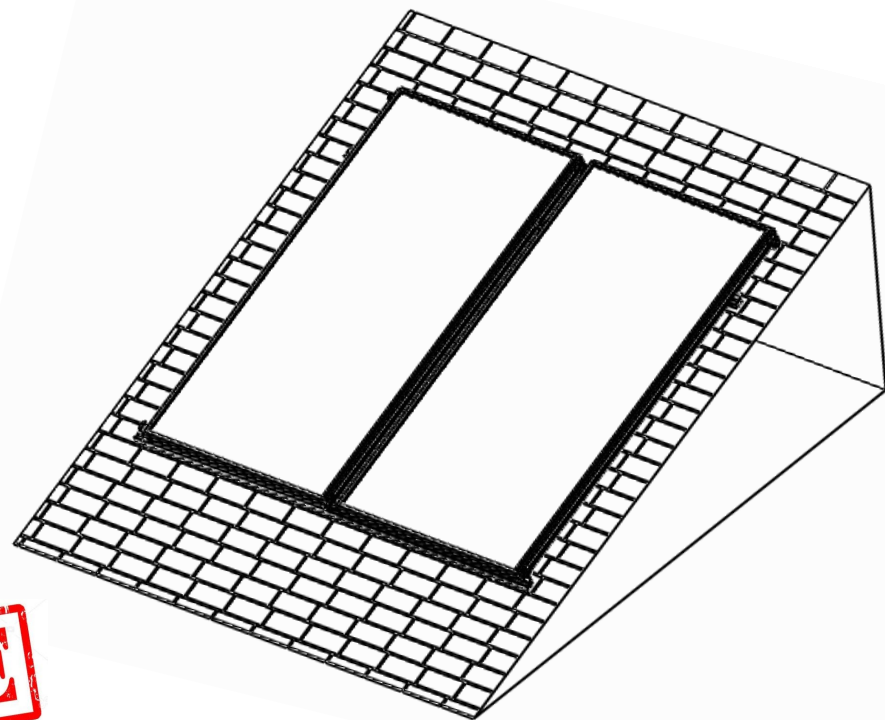
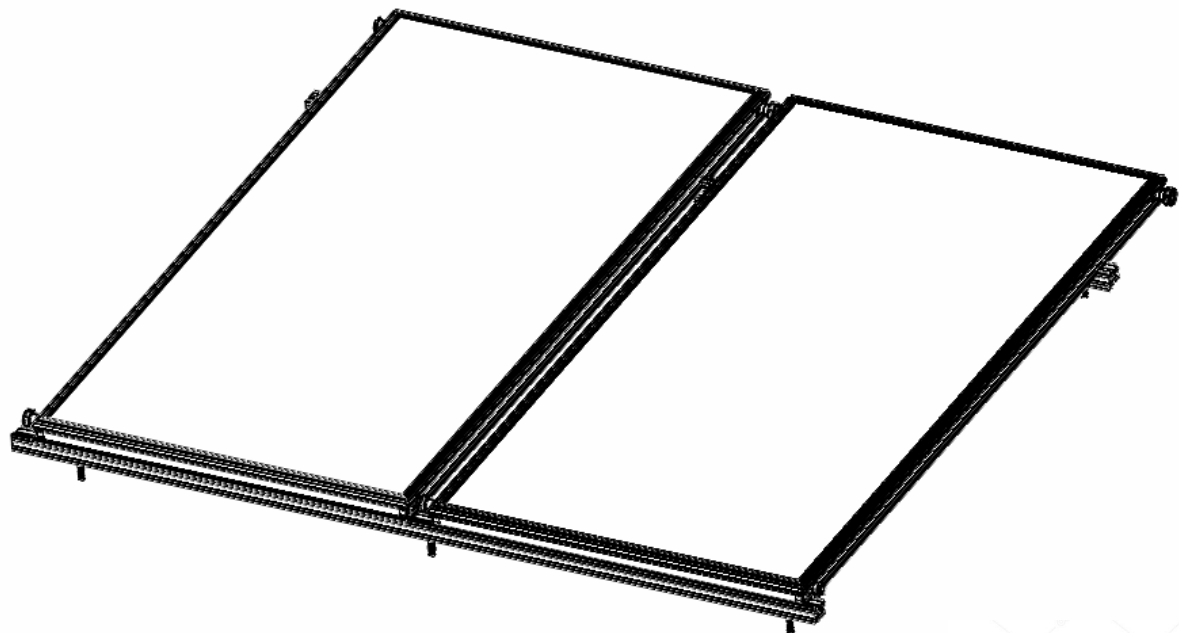
## Step 14 – Secure the 2<sup>nd</sup> collector with the helio-clip



## Step 15 – Secure the other side of the 2<sup>nd</sup> collector with the helio-clip on the rails







**JOB DONE**